

UNDERGROUND SOLUTIONS
YOU CAN RELY ON,
BRANDS YOU CAN TRUST

CORPORATE OVERVIEW

Waterline Renewal Technologies (WRT) is a leading provider of engineered technologies used in the trenchless rehabilitation of wastewater/stormwater infrastructure for municipal, commercial, industrial and residential applications and provides a unique portfolio of products and services through its brands AP/M Permaform, ConShield Technologies, LMK Technologies and Perma-Liner Industries.

We provide trenchless rehabilitation of degraded infrastructure through differentiated products, technologies and services, to prevent inflow and infiltration of sewer systems.

WRT offers unique industry products through its core brands - AP/M Permaform, Centripipe, ConShield Technologies, LMK Technologies and Perma-Liner Industries - to revolutionize the water industry. The brands' experience in designing, patenting

and manufacturing trenchless technology continues to rise while producing products that are cost-effective solutions to rehabilitating, without excavation, existing sewer systems.

With a combined eighty-five years of global industry experience through its core brands, WRT continues to transform the water industry through intentional platform development, design and execution, while being one of the most comprehensive sources of education and information in the industry.

WRT's pioneering approach to trenchless rehabilitation is changing how municipal, commercial, industrial and residential sectors repair their water and wastewater infrastructure. Our goal is nothing short of completely revolutionizing the water industry to get water to where it is needed, when it is needed, and to get the right quality of water to satisfy the specific demand.

MARKETS SERVED



MUNICIPALITY



COMMERCIAL/INDUSTRIAL



RESIDENTIAL



Waterline Renewal Technologies

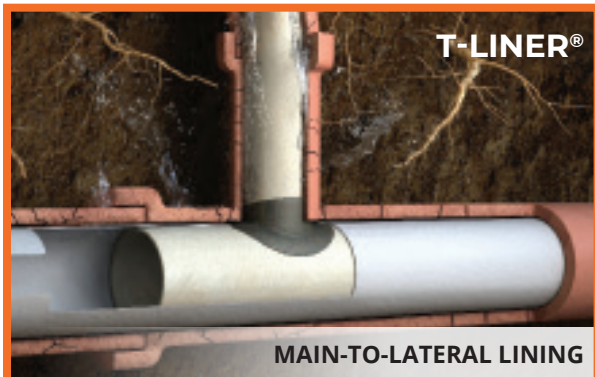
815.640.9302 | info@lmktechnologies.com | waterliner renewal.com/lmk



SCAN ME

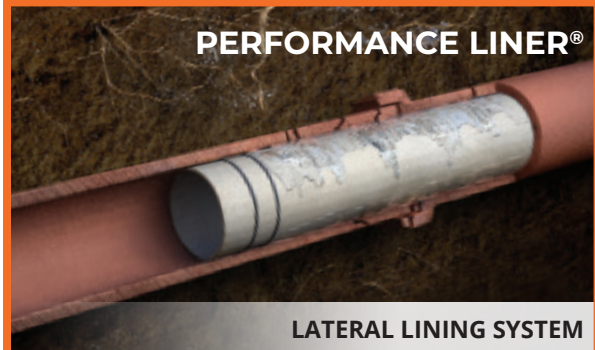
UNDERGROUND SOLUTIONS
YOU CAN RELY ON,
BRANDS YOU CAN TRUST

TRENCHLESS CIPP SEWER RENEWAL SYSTEMS



T-LINER®

MAIN-TO-LATERAL LINING



PERFORMANCE LINER®

LATERAL LINING SYSTEM



PERFORMANCE LINER®

SECTIONAL SPOT REPAIR



CIPMH

FULL DEPTH



CUSTOM EQUIPMENT

CIPP technologies, compliant with applicable ASTM standards, industry leading products and proprietary fabricated equipment including:

MAIN-TO-LATERAL CONNECTION SYSTEMS

The one piece family of lining products

- T-Liner®, with or without a Cleanout
- T-Liner® Shorty with LightRay Technology
- Short Connection Shorty™ Liner
- Stubby Liner
- Sectional Connection Liner
- Man Entry Lapel Liner for Large (27" - 60") Diameter Main Pipes
- Trenchless Cleanout Installation - VAC-A-TEE®
- Insignia™ Hydrophilic Compression Gaskets

LATERAL LINING

- Performance Liner® CIPP Lining
- Insignia™ Hydrophilic Compression Gaskets

MAINLINE REPAIR

- Sectional CIPP Lining
- Lined Main Tap (LMT™) and LMK Saddle Kits
- Sectional Connection Liner
- Insignia™ End Seal Compression Gaskets

MANHOLE REHABILITATION

- CIPMH Full Depth Manhole Lining
- CIPMH Chimney Lining

CIPP EQUIPMENT

- Fully Equipped, Turnkey Trailer Systems
- Picote™ Cutter Systems
- High Quality Custom Equipment



INNOVATING SINCE 1993



LMK provides all of the training and equipment necessary for the successful installation of its products.

LATERAL REPAIR

T-Liner® CIPP Main-To-Lateral Connection

A structural one-piece, full circle CIPP liner renewing 18 inches or more and 360° of the mainline and extending up the lateral pipe as one continuous lining to a maximum length of 150 feet.

- ASTM F2561 and ASTM F3240 compliant systems
- Smooth tapered transitions to host pipe for maximum flow
- Verifiable non-leaking connection with Insignia™ compression sealing gaskets
- Mainline pipe diameters from 6 to 24 inches
- Multiple solutions available

Performance Liner® CIPP Lateral Lining

- ASTM F3240 compliant
- Pipe diameters from 3 to 8 inches
- Up to 160 feet can be installed from one access point
- Can be installed through a cleanout, no digging

VAC-A-TEE® Cleanout System

Trenchless outside cleanout system allowing access to lateral pipe for inspection, cleaning and lining.

- ASTM F3097 compliant
- Structural connection with saddle covering more than 180° of host pipe
- Compatible with all pipe types
- Pipe diameters of 6 inches or less at lateral depths to 15 feet

MANHOLE REPAIR

CIPMH Cured-in-Place Full Depth and Chimney Manhole Liners

Engineered one-size, resin-impregnated and reinforced liner creates a corrosion-resistant manhole rehabilitation.

- ASTM F3033 compliant
- Stretchable universal-sized liner
- Renews manhole barrel sections, eccentric and concentric cones, regardless of construction or size

MAINLINE REPAIR

CIPP Sectional Spot Repair System

- ASTM F2599 and ASTM F3240 compliant
- One-step air inversion point repair
- The structural CIPP lining creates a watertight seal with the use of Insignia O-Rings
- Pipe diameters from 6 to 42 inches and lengths from 3 to 75 feet

Lined Main Tap (LMT™) and LMK Saddle Systems

Engineered saddle reconnects a lateral pipe to a mainline liner or pipe.

- Pipe diameters of 6-inch lined to 24-inch

WATERTIGHT SEALING SYSTEMS

Insignia™ Compression Seals

Hydrophilic compression gasket systems provide a verifiable non-leaking connection for main-to-lateral CIPP junctions, lateral linings and mainline sectional repairs.

- ASTM F3240 compliant
- Seamlessly molded for a 360° compression seal
- End seal sleeve, connection hat and O-ring configurations