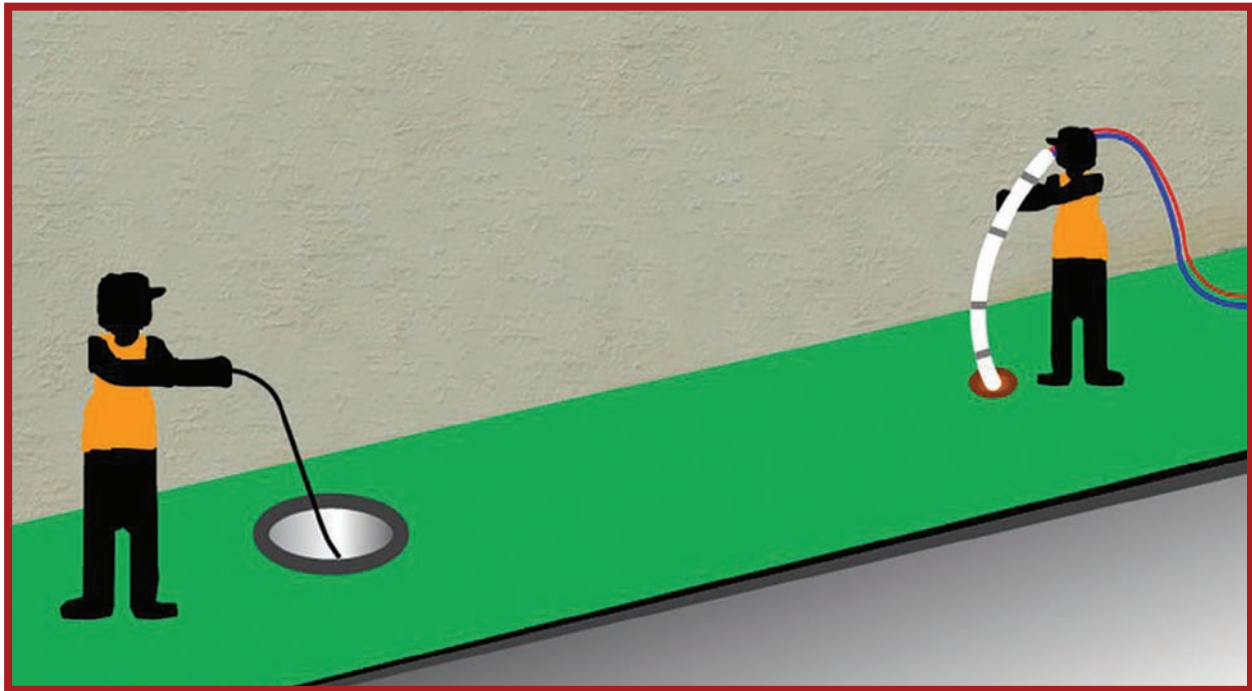


PULL-IN-PLACE™

The Pull-In-Place™ System is designed for 2" – 8" pipe diameters and allows lining 22s, 45s, sweeping 90s and vertical stacks with ease while stopping and starting anywhere in the line. It is a 100% trenchless solution that allows repairs to be made in less than a day and in most cases less than 5 hours.



FEATURES:

- Stand-alone design — No host pipe needed
- Bridges missing sections of pipe
- Relines virtually any material: clay, cast, etc.
- 4" – 6" transitions can be supplied at any length
- 100% solids epoxy
- 3-hour cure time with ambient resin allows for multiple installations per day
- ICC approved

SIMPLE INSTALLATION PROCESS:

1. Clean & televise the line
2. Measure the lateral
3. String a line from your first access point to your second
4. Wet out the liner
5. Attach a winch cable to the leading edge of the liner's pull end
6. Attach the air hose & second winch cable to the back air end
7. Pull the liner into place