

PRODUCT CATALOGUE

NANOeasy

DN 70 - 150 / 3" - 6"

- Mobile cutting system for small pipes in the indoor installation
- Excellent flexibility in pipe bends (90° in DN 100 / 4")
- Optionally with 15 m / 49 ft or 25 m / 82 ft supply hose
- Internal camera with permanent air cleaning
- Manual control by movable steering wheel along the supply hose
- Vertical operation
- Powerful air-operated cutting motor (also usable for stoneware and concrete)



Options

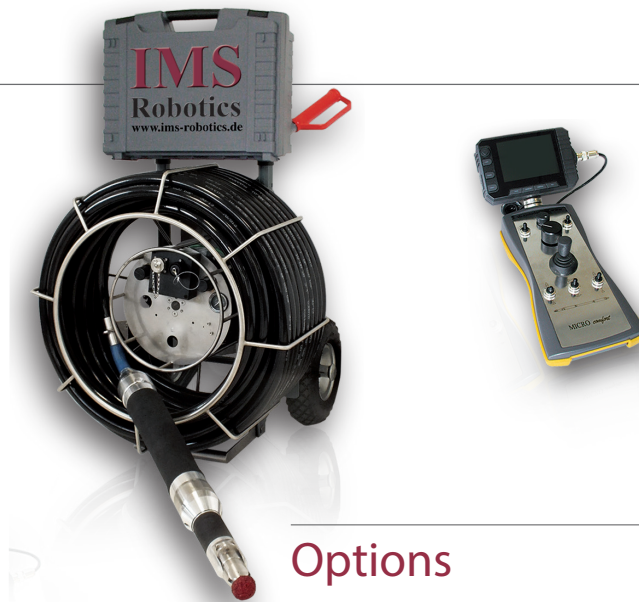
Expansion DN 150 / 6"

Extension 5 m / 16 ft for steering wheel

MICROlight

DN 80 - 250 / 3" - 10"

- Uncomplicated and mobile system for house connection and drainage lines
- Also usable in vertical pipes
- Can be upgraded to MICROautomatic at any time
- 30 m / 98 ft supply hose
- Integrated colour camera with air cleaning
- Powerful air-operated cutting motor (also usable for stoneware and concrete)
- Practical remote control for all functions
- Flexible cable remote control with removable monitor and joystick for precise control



Options

Expansions DN 200 / 8" ; 250 / 10"

Extensions 5 m / 16 ft ; 10 m / 33 ft for remote control

Push rod 11 mm / 50 m / 164 ft

Inspection camera

MICRO S automatic

DN 70 - 250 / 3" - 10"

- Uncomplicated and mobile system for house connection and drainage lines
- Also usable in vertical pipes
- AUTOMATIC and MANUAL feed, climbing and creeping function
- Integrated colour camera with permanent air cleaning and additional water cleaning
- Powerful air-operated cutting motor (also usable for stoneware and concrete)
- Very precise control of the cutter by optional 2 Joysticks

Flexibility in lined pipe bends (90 °) in DN 100 / 4"



IMS Indoor Installation

Options

Expansions DN 200 / 8" ; 250 / 10"

Extensions 3 m / 10 ft ;
for remote control



MICROautomatic plus

DN 80 - 250 / 3" - 10"

- Comfortable with 50 m / 164 ft or 70 m / 230 ft supply hose
- Feed, climbing and creeping function
- Different control units available
- Very precise control of the cutter by optional 2 Joysticks
- Flexibility in pipe bends (2 x 45 °) in DN 100 / 4"

Options

Expansions DN 200 / 8" ; 250 / 10"

Extension 10 m / 33 ft for remote control

Vehicle installation kit

Inspection camera



MICROpremium flex – modular system

All in one system

- Multifunctional usage for
- Cutting (MICROpremium push cutting unit and MICROMotion drivable push cutting unit)
- Cleaning (MICROcleaner) and
- Inspection (inspection camera)
- Comfortable with 50 m / 164 ft and 70 m / 230 ft supply hose
- Control unit with video pc and touch screen
- Data recording



Options

Expansions DN 200 / 8" ; 250 / 10"

Extensions 5 m / 16 ft ; 10 m / 33 ft
for remote control

Carrying Touch control unit

Inspection camera

IMS Indoor Installation

Cutting module
(DN 80 - 250 / 3" - 10")



Options

Granulated wheel

Corundum wheel

Cutting module MICROMotion
(DN 150 - 400 / 6" - 16")





Options

Brace unit

High-pressure water technology MICROcleaner
up to 1000 bar (DN 100 - 200 / 4" - 8")



IMS INDOOR INSTALLATION

Technical Specifications	MICROlight	MICROlight plus
		
Item number	031 08 000	031 10 000
Flexibility 90° soft bend in DN 100 / 4"	✓	✓ (without ring)
Air-powered cutter motor	1.1 kW	1.1 kW
Range of operation in DN	80 - 250	80 - 250
Mobile cable reel	✓	✓
Colour Camera with LED	✓	✓
Camera cleaning with permanent air	✓	✓
Water cleaning for camera	–	–
Pneumatic bracing bladder / Numbers	1	1
Feeding function / mm	–	✓ 50
Creeping/Climbing function (3 bladders)	–	–
Remote control hand held (1 Joystick)	✓	✓
Remote control professional box (2 Joysticks)	–	–
Remote control „touch panel“	–	–
Others		
Supply hose lenght	30	30
Supply hose style	soft	soft
Weight of the system (approx.)	47 kg	47 kg
Dimensions (L x W x H)	660 x 550 x 800 mm 26" x 22" x 31"	660 x 550 x 800 mm 26" x 22" x 31"
Options		
Meter counter	–	–
Supply hose extension (15/30 m)	–	–
Expansion for DN 200/250	o	o
Extension for remote control	o	o
Inspection camera	o	o
Upgrade to next higher model	o	–
Multifunctional tools / Cleaner + motion	–	–

✓ included • o = optional • – = not applicable

MICRO S automatic	MICROautomatic plus	MICROautomatic plus (P)/(US)	MICROpremium	MICROpremium flex modular system
				
045 08 000	033 02 000	033 05 000 033 04 000	032 09 000 032 10 000	037 00 001 037 00 002
✓	✓	✓	✓	✓
1.1 kW	1.1 kW	1.1 kW	1.1 kW	1.1 kW
70 - 250	80 - 250	80 - 250	80 - 250	80 - 400
✓	✓	✓	✓	✓
✓	✓	✓	✓	✓
✓	✓	✓	✓	✓
✓	✓	✓	✓	✓
2	2	2	2	2
✓ 100	✓ 100	✓ 100	✓ 100	✓ 100
–	✓	✓	✓	✓
✓	✓	–	–	–
✓	–	✓	–	–
✓	–	–	✓	✓
30	50	50 / 70	50 / 70	50 / 70
soft	stiff	stiff	stiff	stiff
55 kg	57 kg	57/ 64 kg	68 / 75 kg	
660 x 550 x 800 mm 26" x 22" x 31"	790 x 630 x 1050 mm 31" x 25" x 41"	790 x 630 x 1050 mm 31" x 25" x 41"	790 x 630 x 1050 mm 31" x 25" x 41"	
✓	–	–	o	o
–	–	–	–	–
✓	o	o	o	o
–	o	o	o	o
–	o	o	o	o
–	–	–	–	–
–	–	–	–	o

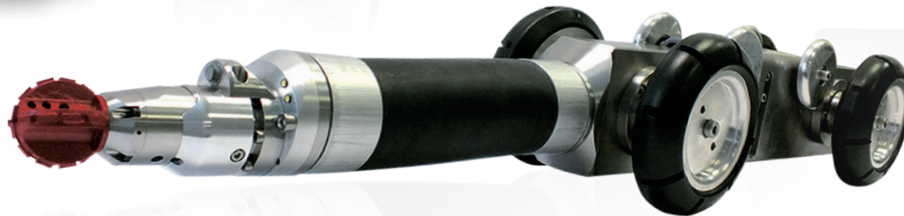
IMS MAIN SEWER - MAINTENANCE AND REHABILITATION

DRIVE

DN 150 - 400 / 6" - 16"

- Very robust and mobile cutting robot system for small and medium-sized main sewers with a cutter outside diameter of 120 mm / 5"
- Powerful air-operated cutting motor
- Up to 150 m / 492 ft supply hose on manual or motorized cable reel
- Turning and swivelling movement via joystick for precise operation
- Integrated colour camera with air cleaning and water cleaning
- Different control units available

Applications



Options

- Water equipment
- Automatic cable reel
- Hand crank
- Meter counter
- Data recording
- Extension 10 m / 33 ft for remote control
- Vehicle installation kit
- Inspection camera
- Granulated wheel
- Corundum wheel
- QUICK LOCK Connection (DRIVE)



DRIVEplus 4

DN 150 - 600 / 6" - 24"

- Very robust and mobile cutting robot system for small and medium-sized main sewers
- Preparatory milling operations for the renovation (incorrect joints etc.)
- Removal of roots and other deposit
- Maintaining of intruding nozzles or other barriers (rubber, metal, etc.)
- Opening of laterals
- Removal of damaged liners
- Application range in pipes: DN 150 - 600 / 6" - 24"
- Portable system
- Reverse travel sensor
- Self-propelled carriage with pneumatic stabilizer for better stability and traction



Options

Expansion set DN 450 / 18" - 600 / 24"

Water cleaning for camera

Rear view camera

Motorized cable winding

Extension cable for the control unit

Granulated wheel

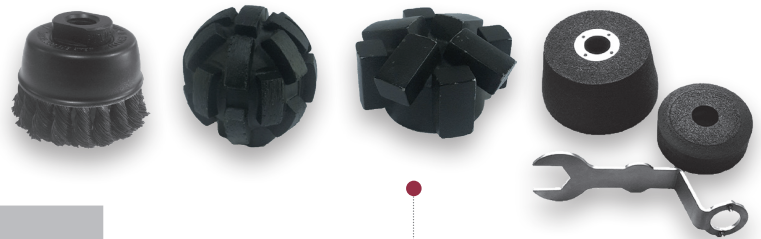
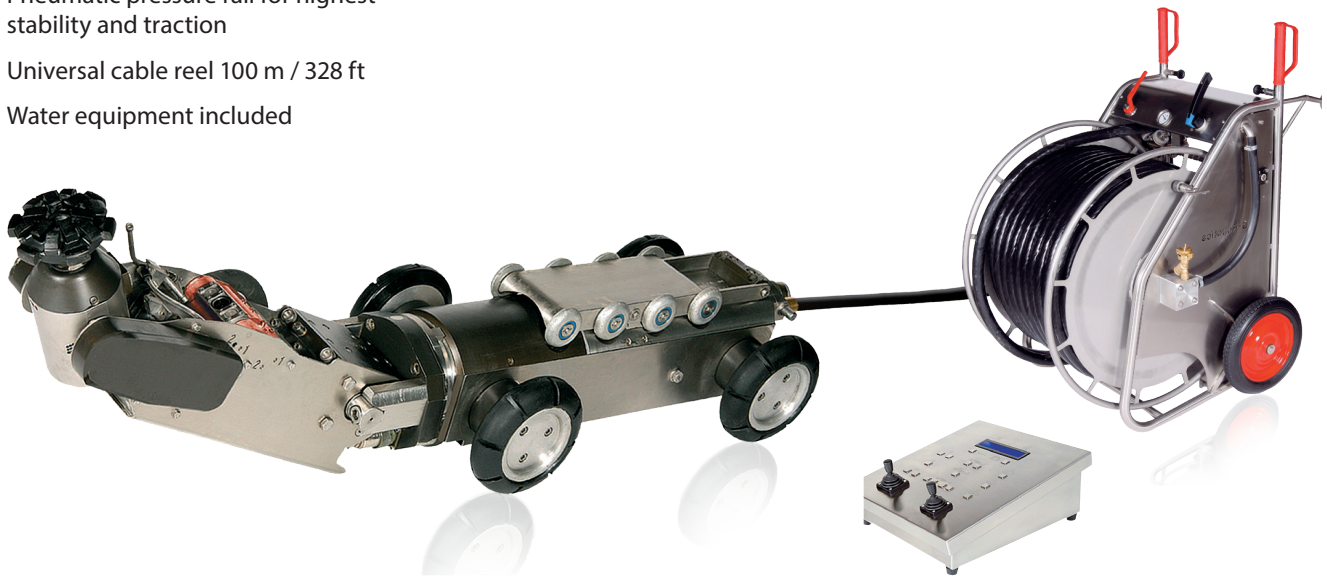
Corundum wheel

QUICK LOCK Connection (DRIVE)

TURBO 3

DN 200 - 800 / 8" - 32"

- Cutting robot for main sewers from DN 200 / 8" up to DN 600 / 24"
- Powerful air-operated cutter motor
- Turning and swivelling movement of cutter head
- Swivel colour camera with LED's and wipers
- Front headlight
- Reverse drive sensor
- Pneumatic pressure rail for highest stability and traction
- Universal cable reel 100 m / 328 ft
- Water equipment included



Options

Expansion set for circular sections
DN 450 / 18" - 600 / 24"

Expansion parts DN 700 / 28" - 800 / 32"

Motor driven cable reel

Data recording with meter counter

Extension supply hose 50 m / 164 ft

Various cutting tools (concrete, metal, roots, liners)

QUICK LOCK Connection

Specially formed cutting tools for different materials.

Diamond tools for plastics (PVC, felt liners, etc.)



Diamond tools for concrete, stoneware and GRP

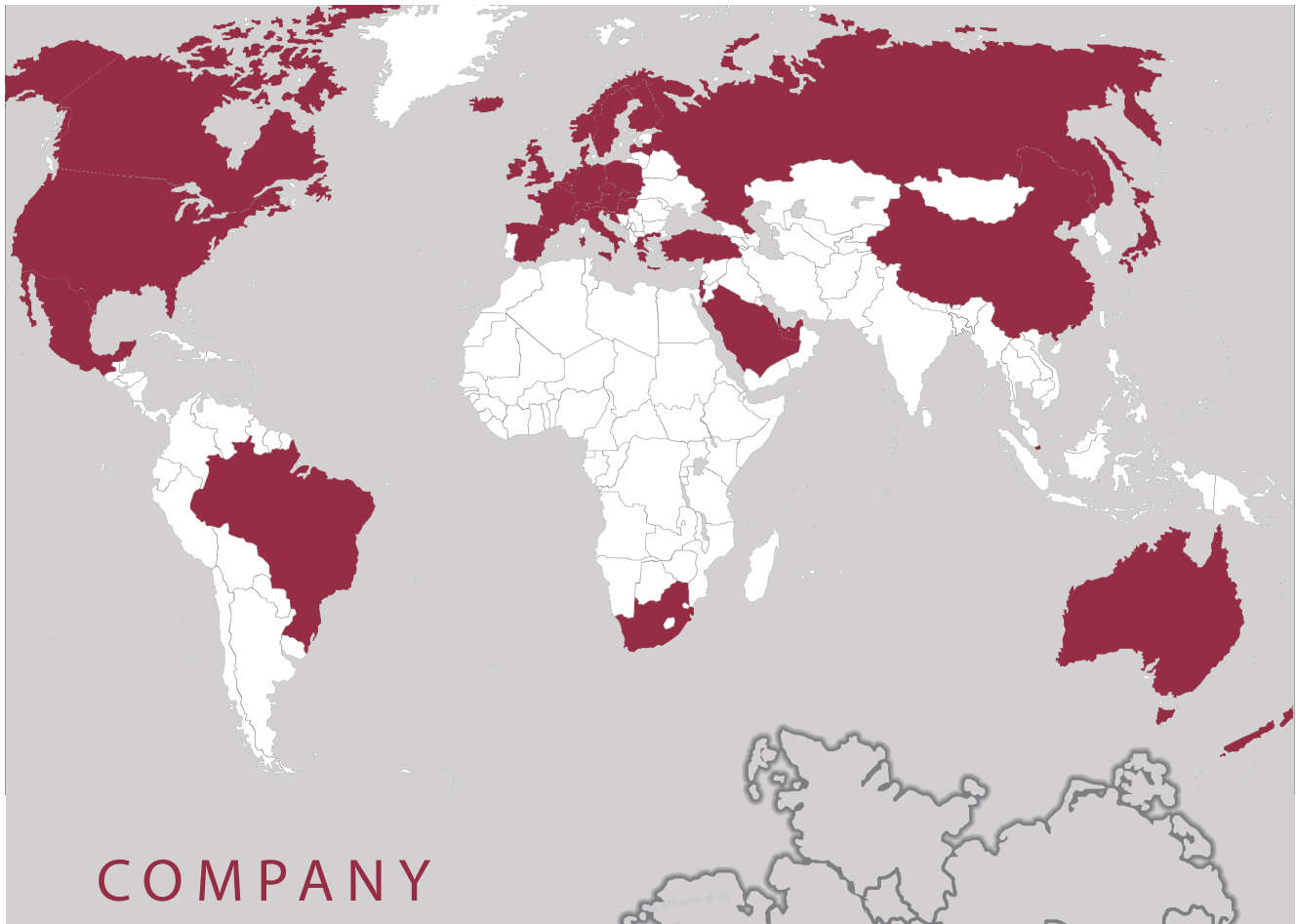


Brushing tools for lime, roots, plastics, film residues



Abrasive tools for iron and steel





was founded in 1992



focused on developing and manufacturing of

- Robotic systems for pipe rehabilitation
- Water demolition pipe cleaning tools
- UV curing technology for CIPP since 2014
- Indoor Camera systems
- Production located in Germany



app. 110 employees



about 2000 sold robot systems



in over 30 countries





IMS Robotics GmbH · Am Bauhof 6 · D - 01458 Ottendorf-Okrilla · Germany

Phone: Sales +49 35205 7555 0 · Service +49 35205 7555 25 · Rental +49 35205 7555 30

Fax: +49 35205 53749 · e-mail: info@ims-robotics.de · Web: www.ims-robotics.de/en